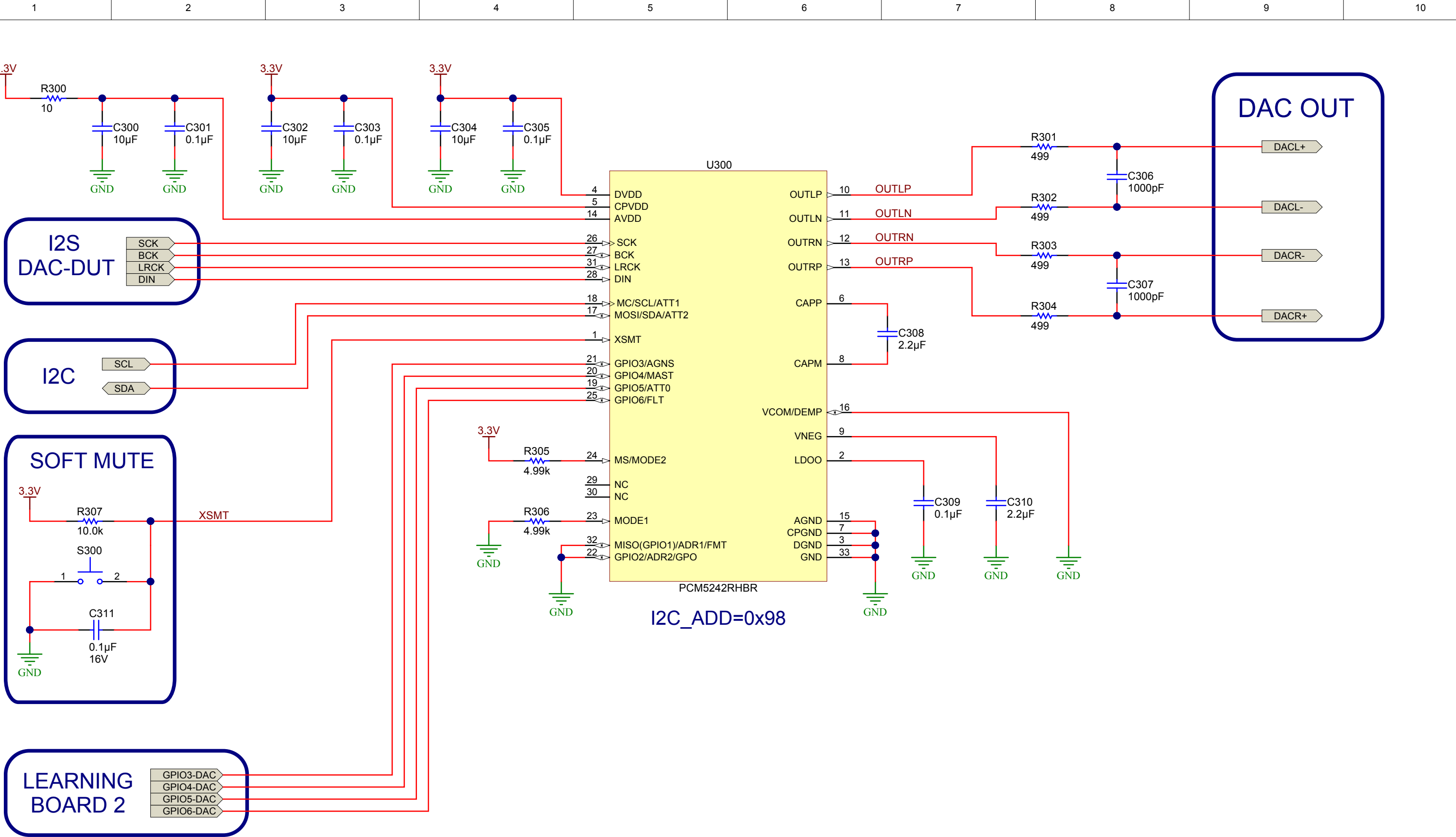


Texas Instruments and/or its licensors do not warrant the accuracy or completeness of this specification or any information contained therein. Texas Instruments and/or its licensors do not warrant that this design will meet the specifications, will be suitable for your application or fit for any particular purpose, or will operate in an implementation. Texas Instruments and/or its licensors do not warrant that the design is production worthy. You should completely validate and test your design implementation to confirm the system functionality for your application.

Number: TIDA-00874
SVN Rev: Version control disabled
Drawn By: LDN
Engineer: Matt Beardsworth

Designed for: Not For Public Release
Project Title: TPA3251D2REF1
Sheet Title: USB to I2C/I2S/GPIO Controller Board
Assembly Variant: 001
File: USB-TAS1020B.SchDoc
Contact: <http://www.ti.com/support>



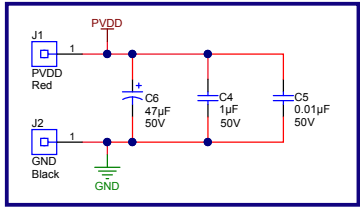
Texas Instruments and/or its licensors do not warrant the accuracy or completeness of this specification or any information contained therein. Texas Instruments and/or its licensors do not warrant that this design will meet the specifications, will be suitable for your application or fit for any particular purpose, or will operate in an implementation. Texas Instruments and/or its licensors do not warrant that the design is production worthy. You should completely validate and test your design implementation to confirm the system functionality for your application.

Number: [TIDA-00874](#)
SVN Rev: Version control disabled
Drawn By: [LDN](#)
Engineer: [Matt Beardsworth](#)
Sheet: [3](#) of [5](#)

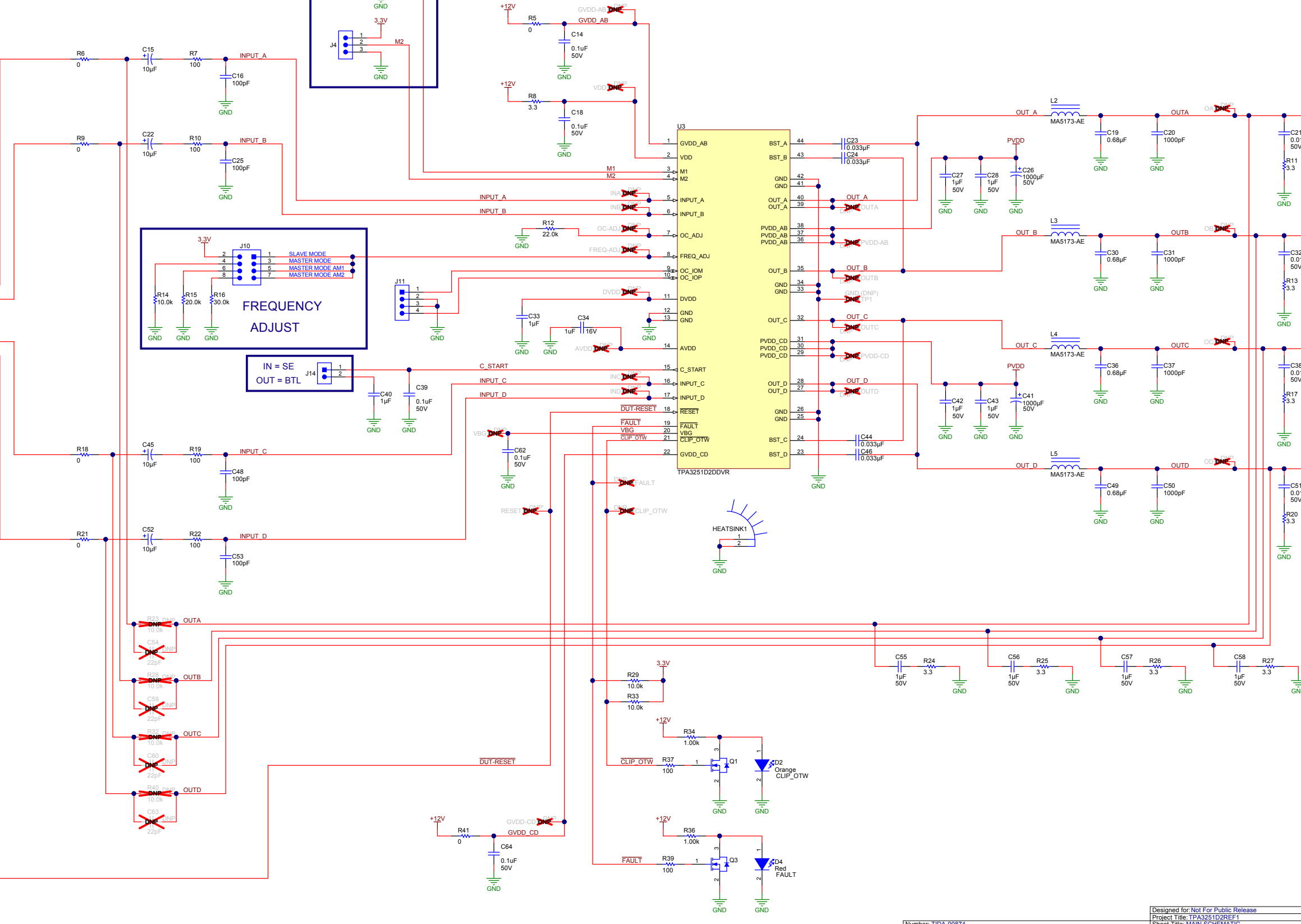
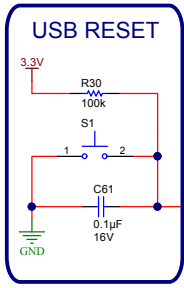
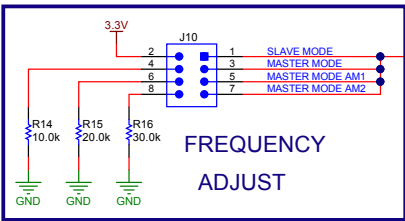
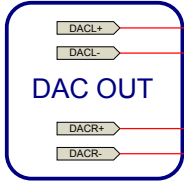
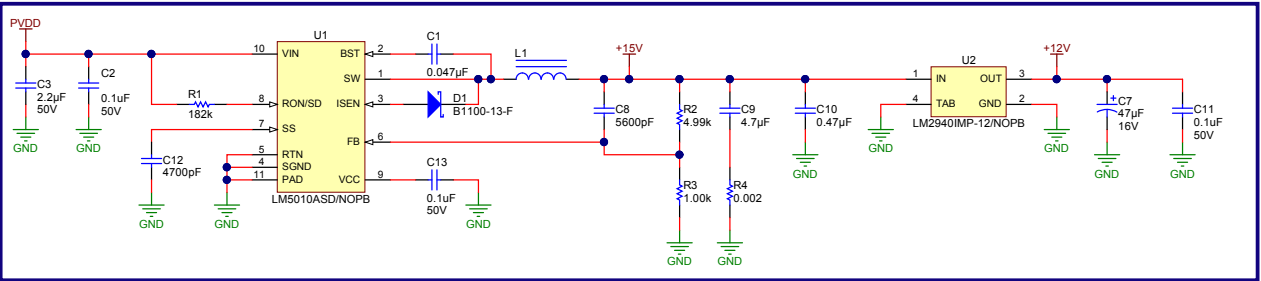
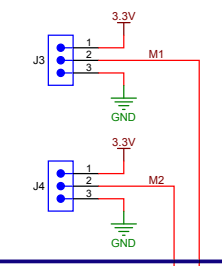
Designed for: [Not For Public Release](#)
Project Title: [TPA3251D2REF1](#)
Sheet Title: [PCM5142 DAC](#)
Assembly Variant: [001](#)
File: [DAC-PCM5242.SchDoc](#)
Contact: <http://www.ti.com/support>

Mod. Date: 11/13/2015
Size: AB
Rev: [E1](#)

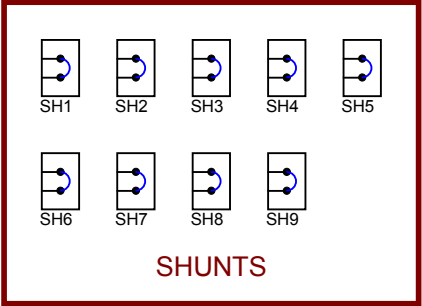
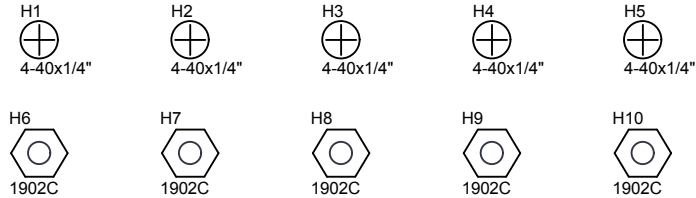
 **TEXAS
INSTRUMENTS**
<http://www.ti.com>
© Texas Instruments 2014



| MODE PIN SELECTION | | | | |
|--------------------|----|------------|--------------|------------------------------|
| M2 | M1 | INPUT MODE | OUTPUT | DESCRIPTION |
| 0 | 0 | 2N + 1 | 2xBTL | STEREO BTL OUTPUT, AD MODE |
| 0 | 1 | 2N/1N + 1 | 1xBTL + 2xSE | 2.1 BTL + SE MODE, AD MODE |
| 1 | 0 | 2N + 1 | 1xBTL | PARALLEL BTL OUTPUT, AD MODE |
| 1 | 1 | 1N + 1 | 4xSE | SINGLE ENDED OUTPUT, AD MODE |



Texas Instruments and/or its licensors do not warrant the accuracy or completeness of this specification or any information contained therein. Texas Instruments and/or its licensors do not warrant that this design will meet the specifications, will be suitable for your application or fit for any particular purpose, or will operate in an implementation. Texas Instruments and/or its licensors do not warrant that the design is production worthy. You should completely validate and test your design implementation to confirm the system functionality for your application.



PCB
LOGO

Texas Instruments

PCB
LOGO

Pb-Free Symbol

PCB
LOGO

FCC disclaimer

ZZ1
Assembly Note
These assemblies must comply with workmanship standards IPC-A-610 Class 2, unless otherwise specified.

ZZ2
Assembly Note
These assemblies are ESD sensitive, ESD precautions shall be observed.

ZZ3
Assembly Note
These assemblies must be clean and free from flux and all contaminants. Use of no clean flux is not acceptable.